



3 Bedrooms



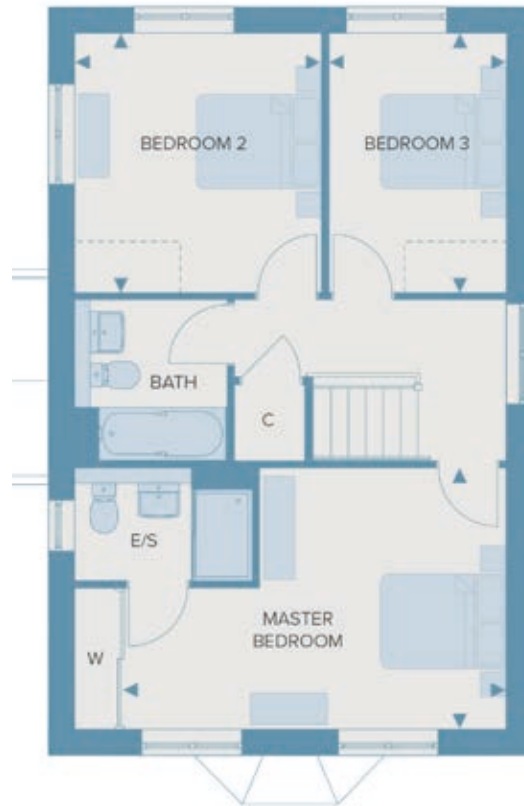
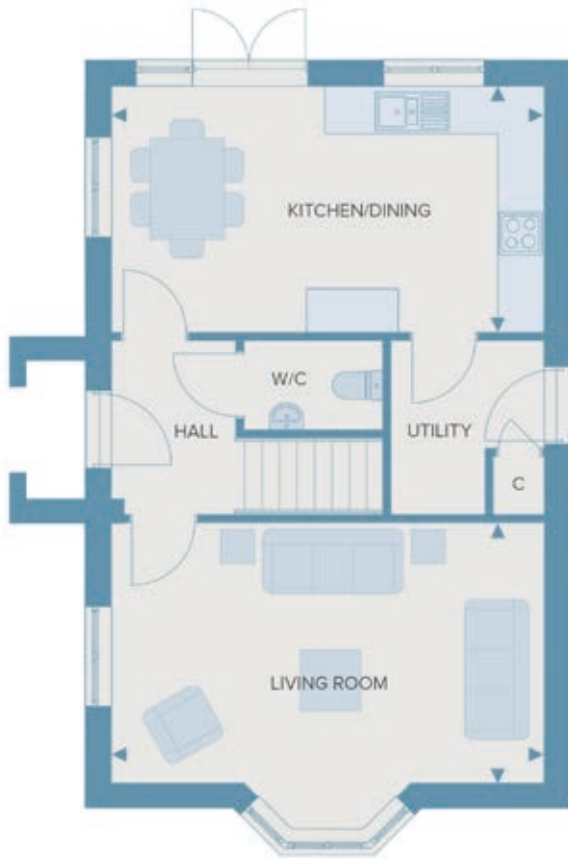
2 bathroom



Garage to specific plots



2 Allocated parking spaces



Total internal area 105.9m² 1139sq.ft

Ground Floor

Living Room	5.71m x 3.41m	18'9" x 11'2"
Kitchen/Dining	5.70m x 3.24m	18'9" x 10'7"
Cloakroom	1.84m x 1.17m	6'0" x 3'10"
Utility	2.02m x 2.26m	6'8" x 7'5"

First Floor

Bedroom 1	5.06m x 3.45m	16'7" x 11'4"
Bedroom 2	3.26m x 3.43m	10'8" x 11'3"
Bedroom 3 /Study	2.35m x 3.43m	7'9" x 11'3"
Ensuite	2.34m x 1.27m	7'8" x 4'2"
Bathroom	1.81m x 2.12m	5'11" x 6'11"

Made for life.